



# Priority Selection Process

*Participants: Priority Spokane Steering Members*

September 2019

# Important Acknowledgements

- ▶ Our process is imperfect.
- ▶ There are important voices & perspectives missing that still need to be heard.
- ▶ Each of the priorities have a disproportionate impact on minority populations.
- ▶ Each of the priorities is deserving of our focus.
- ▶ We can't solve every problem.

*“As a Black woman born in Spokane, my family and I would tell you there’s still lots of work to do in building trust here. For a long time we only made it by keeping our heads down, sticking together, and being VERY suspicious of anyone claiming to want to help. Cause that ‘help’ usually hurt.”*

*- Volunteer at MLK Center*

**Our Commitment:** *Earnest dialogue and active listening are keys to challenging our assumptions and understanding those who are different from us. Priority Spokane commits to listening first, meeting with groups where they’re at, and working diligently to be inclusive, culturally informed, and equitable in our work. We envision a thriving Spokane County where all residents live healthy, fulfilling lives free of racism, poverty, violence, and other systems of oppression. Where all residents will have equitable opportunities and resources, leading to optimal health and well-being.*

# Top 3 Priorities From 2018 Community Health Assessment

- ▶ • **Priority 1: Reduce Impacts of Family Trauma and Violence**
- ▶ • **Priority 2: Increase Access and Services for Residents with Co-occurring Substance Abuse and Mental Health Issues**
- ▶ • **Priority 3: Improve the Availability of Affordable Housing**

# Priority Spokane History

- ▶ **Past Priority:** Improve HS Graduation Rates

- ▶ Increased HS Graduation Rates from below 60% to over 80%

- ▶ **Current Priority:** Stabilize Homeless Students in K-8<sup>th</sup> & their Families

- ▶ Stabilized and/or housed 80% of homeless or in danger of becoming homeless students in K-8<sup>th</sup> and their families engaged in our pilot program. Expanded focus to include infants and pre-k.

- ▶ **Next Priority: ?**

# 2019 Research, Data, & Feedback

- ▶ **Priority Spokane Presentations:** Spokane Low Income Housing Association, Lutheran Community Services, Catholic Charities, City of Spokane Housing Services, Women Helping Women Fund, YWCA, Spokane Fire Department

# Community Conversations: *Stakeholders, Leaders, Providers, Those Impacted*

- ▶ **Interviews:** *What's the need? What are you doing? What is your capacity? What still needs to be done? How could we help?*

**1. Family Violence:** Embrace WA, WA DSHS, OKOB, Morningstar Boy's Ranch, Hutton Settlement, Union Gospel, Vanessa Behan, MLK Center, Spokane SPD, Spokane County Sheriff's Dept, Spokane County Courts, Odyssey YC, Excelsior YC, VOA, CASA Volunteers, Partners With Families & Children, Transitions, Jonah Project, HRC Ministries, YWCA, Lutheran Community Services

**2. Access to Substance Abuse Treatment Services & Mental Health:** Frontier Behavioral Health, Spokane Addiction Recovery Centers, Community Addiction Treatment, Daybreak, Spokane Treatment & Recovery Services, Colonial Clinic, Isabella House, American Behavioral Health Systems Cozza, Healing Lodge Sage Boys, Pioneer Center East, Sun Ray Court, Passages Family Support, CHAS, SNAP, Inland NW Behavioral Health, WA DBHR, WA OCP

**3. Affordable Housing:** Transitions, VOA, Catholic Charities, SNAP, Habitat for Humanity, Spokane Home Builders Association, Spokane Housing Ventures, Baker Construction, Greenstone, SLIHC, Tenants Union of WA

# Community Survey: 87 Participants

1. Of the 3 priorities identified, which is your organization focused on & who will you be serving?
2. What will you be doing & your timeline for doing so?
3. What resources will be put towards these priorities?
4. What unmet needs still exist?
5. How could Priority Spokane support the work?

Spokane County Library, Aileen Luppert

CME, Lee Williams

LCS, Ligeia DeVleming

New Hope Resource Center, Janeen Leachman

HRC Ministries, Caleb Altmeyer

DSHS Aging Longterm Care, Daniel Ruddell

Goodwill Industries, Kristine Williams

Children's Home Society, Reade Rodrigues

SNAP, Carol Weltz

SRHD, Amy Cross

American Indians Community Center, Marsha Matte

SNAP, Chris Pasterz

SNAP, Amber Johnson

Spokane Workforce Council, Mark Mattke

SRHD, Marie Henning

NAMI Spokane, Scott Bowmer

Spokane Municipal Court, Judge Mary Logan

Empire Health Foundation, Sarah Lyman

Catholic Charities, Lisa Green

WSU Spokane, Jan McCormick

West Central Development Council, Woody Garvin

SCC Jessica Cross

SRHD, Jennifer Hansen

WSU Spokane, Jessica Mason

Frontier Behavioral Health, Melissa Robledo

Spokane Treatment & Recovery Services, Mandy Baird

Ann Ogden Hall, Kamee Bissell

Spokane Regional ESOL, Joshua

American Behavioral Health Systems, Deza Rae Anderson

Better Health Together, Alison Poulsen

ECEAP, Julianna Greiner

Healthcare for Homeless Vets, Gordon Graves

Catholic Charities, Cassandra Tuttle

Goodwill Industries, Jennifer Martin

Goodwill Industries, Jennifer Poblete

YFA Connections, Cathy Doran

Spokane Public Schools HEART, Sarah Miller

Spokane County, Samantha Frank

Frontier Behavioral Health Homeless Outreach, M Fox

CCS Head Start, Dina Patrick

Street Wise Café, Rob Bryceson

Family Promise of Spokane Open Doors, Serena Graves

SRHD, Lyndia Wilson

Children's Home Society of WA, Amanda Russell

Catholic Charities, Barry Barfield

Early Head Start, Anne Zaro

SRHD HIV Case Management, S Lechot

Spokane County Superior Court Therapeutic, Sandra Altshuler

Dishman Hill HS, Lauren House

LCS, Brigitte Amamoto

SRHD, Tawnya Benzo

SNAP, Susan McClure

Career Path Services, Beckie Sommerville

Providence Health Care, Sara Clements-Sampson

Catholic Charities, Nadine Can Stone

Spokane Urban Ministries, Tami Thomas

SRHD, Kim Kreber

Spokane County, Tim Crowley

Pioneer Human Services, Joseph Parham

Amerigroup, Shand Blunt

Delta Dental, Karen Davis

Brain Injury Alliance of WA, RaMona Pinto

Better Health Together, Hadley Morrow

SRHD, Susan Schultz

Spokane Housing Authority

Pioneer Human Services, Myesheia Simpson

WA State Health Care Authority, Wendy Nelson

SLIHC, Kay Murano

LCS, Erin

YWCA, Regina

# Important Acknowledgements

- ▶ Our process is imperfect.
- ▶ There are important voices & perspectives missing that still need to be heard.
- ▶ Each of the priorities have a disproportionate impact on minority populations.
- ▶ Each of the priorities is deserving of our focus.
- ▶ We can't solve every problem.

**Our Commitment:** *Earnest dialogue and active listening are keys to challenging our assumptions and understanding those who are different from us. Priority Spokane commits to listening first, meeting with groups where they're at, and working diligently to be inclusive, culturally informed, and equitable in our work. We envision a thriving Spokane County where all residents live healthy, fulfilling lives free of racism, poverty, violence, and other systems of oppression. Where all residents will have equitable opportunities and resources, leading to optimal health and well-being.*



# What We've Learned

- ▶ **Priority 1: Family Trauma & Violence** *(from “State of Women & Children in Spokane County” report)*
  - ▶ 57.7 Child Abuse/Neglect Cases in 2017 per 1,000
  - ▶ 618 Youth completed or attempted suicide in 2017 per 100,000
  - ▶ 13.7 Domestic Violence Offenses in 2017 per 1,000*(all above WA State averages & on upward trend)*
- ▶ **From Survey: \$12,500,000 dedicated to this focus\***
- ▶ **What's still needed?**

*“Community organizing/engagement! Coming up with a well-researched comprehensive plan. Research and information and data related to prevalence. Coordinating. Policy advocacy.” -LCS*

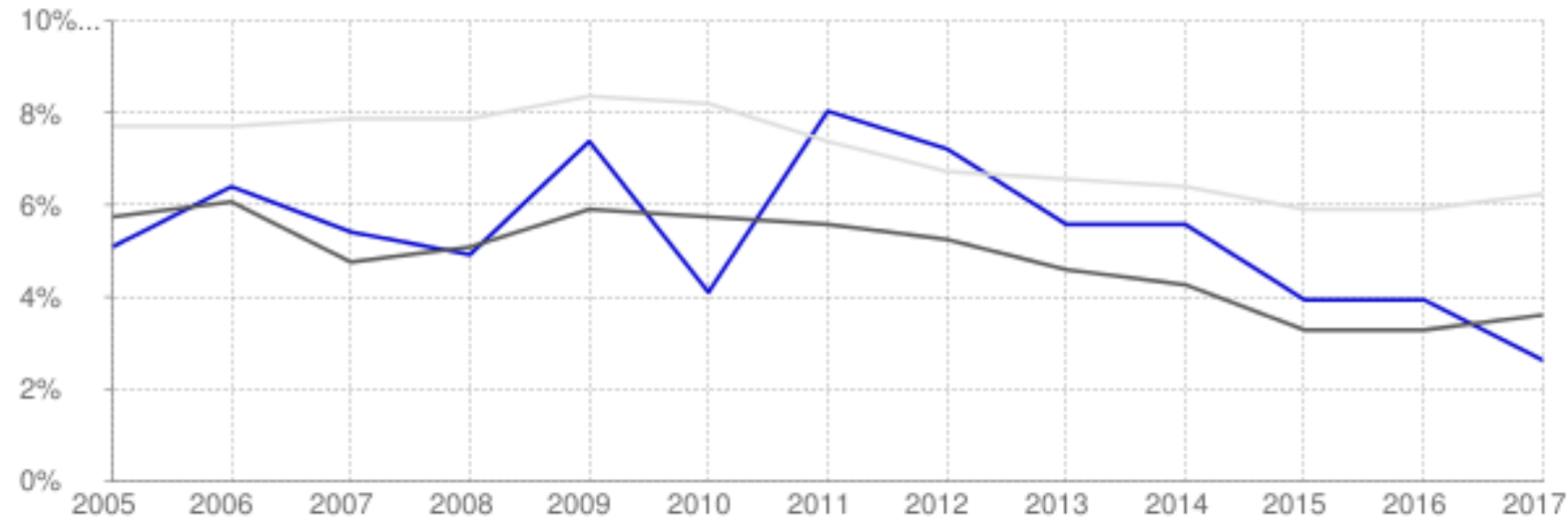
# What We've Learned

- ▶ **Priority 2: Increase Access and Services for Residents with Co-occurring Substance Abuse and Mental Health Issues**
  - ▶ Spokane Overdose Rate .83/Day (*majority heroine related*) -SFD
  - ▶ Number of mental health related calls has increased by 10% every year since 2012 - SFD
  - ▶ 80% increase in new patients seeking mental health care since 2012 -FBH
  - ▶ In 2017 there were only 8.3 inpatient beds/100,000 residents in E. WA compared to an average of 26 beds nationally. When INWBH's facility fully opens this year E. WA's average will increase to 27.3 inpatient beds/100,000. *American College of Emergency Physicians*
- ▶ From Survey: \$57,000,000 dedicated to this focus\*
- ▶ What's Still Needed? "We need more treatment options for addiction related needs." - INBHC "Mental Health is complex. We need more holistic and community-based treatment options." -Consumer & CPC "We need to eventually get our heads above water to have the conversation around prevention as it relates to mental health." - Passages Family Support

# What We've Learned

- ▶ **Priority 3: Improve the Availability of Affordable Housing**
  - ▶ 24% of Spokane County Households cannot afford 2 bedroom rental -*SLIHC*
  - ▶ 2.3% Vacancy Rate among 3,454 affordable rentals -*SLIHC*
  - ▶ 2.7% Spokane Vacancy Rate 2017 *UofW Dept. of Numbers (2018 data due Sept. 2019)*
  - ▶ From Survey: \$4,500,000 dedicated to this focus\*
  - ▶ What's Still Needed? "We need more affordable housing options." -*SLIHC*

Rental Vacancy Rate: Spokane WA, Washington, US



# Opportunities

- ▶ 1. Community Mapping Project focused on Behavioral Health & Family Trauma & Violence
- ▶ 2. Invitations and requests for assistance around family violence & trauma prevention to: research, coordinate, organize, plan
- ▶ 3. Invitation to partner with the DV Coalition
- ▶ 4. Invitation to assist in finding additional funding for affordable housing
- ▶ 5. Potential funding identified for addressing family trauma & violence prevention
- ▶ 6. Invitation to partner with Inland NW Behavioral Health to raise awareness around 24 hour emergency mental health services (*when they become available*)

# Feedback From Absent Steering Members

- ▶ *“I think that both #1 and #2 are important and ultimately would lead to some help with #3 by reducing demands on the affordable housing system. SO. . . while I know increasing access to affordable housing is super important - I would focus on either #1 or #2. Bet you didn’t see that coming.”* -Pam Tietz, ED Spokane Housing Authority
- ▶ *“My feedback is that while I assuredly think all three are important, if it were just me, I would prioritize #1. I could take you to any school in our region and you would hear from staff about the impact and challenge of trauma within families and the lives of children...”* -Michael Dunn, Ed. D., Superintendent NE Washington ESD 101

# General Discussion

- ▶ Is there sufficient and sound evidence of the need?
- ▶ Where could we meet a need/gap not already being addressed?
- ▶ What can we accomplish in 3-5 years?
- ▶ Will the results be measurable?
- ▶ Do we have stakeholder support/approval? ...*are we wanted at the table?*
- ▶ Where do we have the biggest likelihood of being a catalyst for greater impact?
- ▶ Are we able to target a root cause?

# Executive Director Recommendation:

- ▶ *There is great need in each of the three priority areas, however, I believe we have the greatest opportunity to work in reducing the impacts of family trauma and violence- priority #1. There is a growing momentum in Spokane to address this issue, solid evidence of the tremendous need, and there have been multiple invitations to partner and collaborate. There are unmet needs within this priority that Priority Spokane is uniquely equipped to meet.*

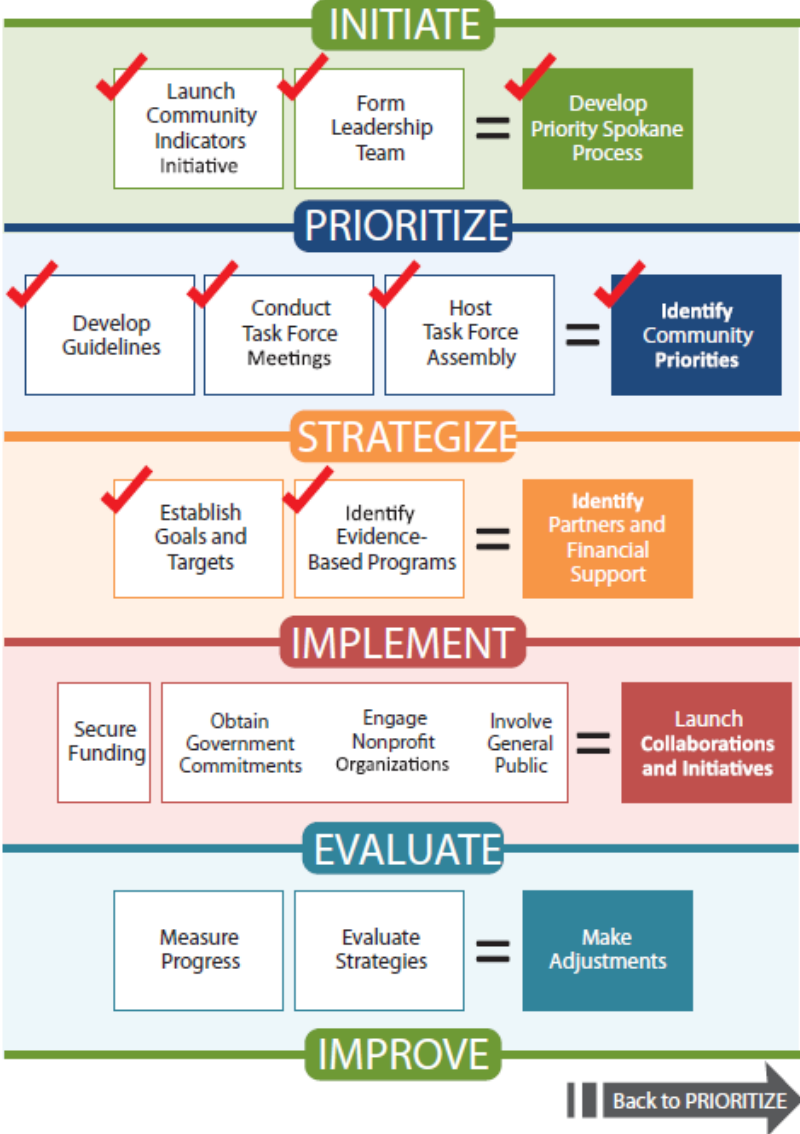
*-Ryan Oelrich, ED*

# Priority Vote

- ▶ • **Priority 1: Reduce Impacts of Family Trauma and Violence**
- ▶ • **Priority 2: Increase Access and Services for Residents with Co-occurring Substance Abuse and Mental Health Issues**
- ▶ • **Priority 3: Improve the Availability of Affordable Housing**



# Next Steps





Thank you for your participation, feedback,  
and guidance in this important process.